




THE
GARDEN
INITIATIVE

BRINGING
HISTORY
OUTDOORS



STUDY
NATURE,
LOVE
NATURE,
STAY CLOSE
TO NATURE.
IT WILL
NEVER
FAIL YOU.

FRANK LLOYD WRIGHT

INTRO

HELP BRING HISTORY OUTDOORS

The History Center of Lake Forest-Lake Bluff is a wonderful place to gather and celebrate the fascinating stories of our community. One of the most compelling stories, however, has yet to be told. It is the story of how significant landscape design styles and land conservation efforts were conceived and developed in Lake Forest, and how they grew to influence the nation.

We are on a mission to create learning gardens that will tell the story of these influential design styles and highlight different gardens of significance, and the designers who brought them to life. We plan to transform our grounds into an outdoor, living museum that will be accessible to all to learn, connect and reflect.

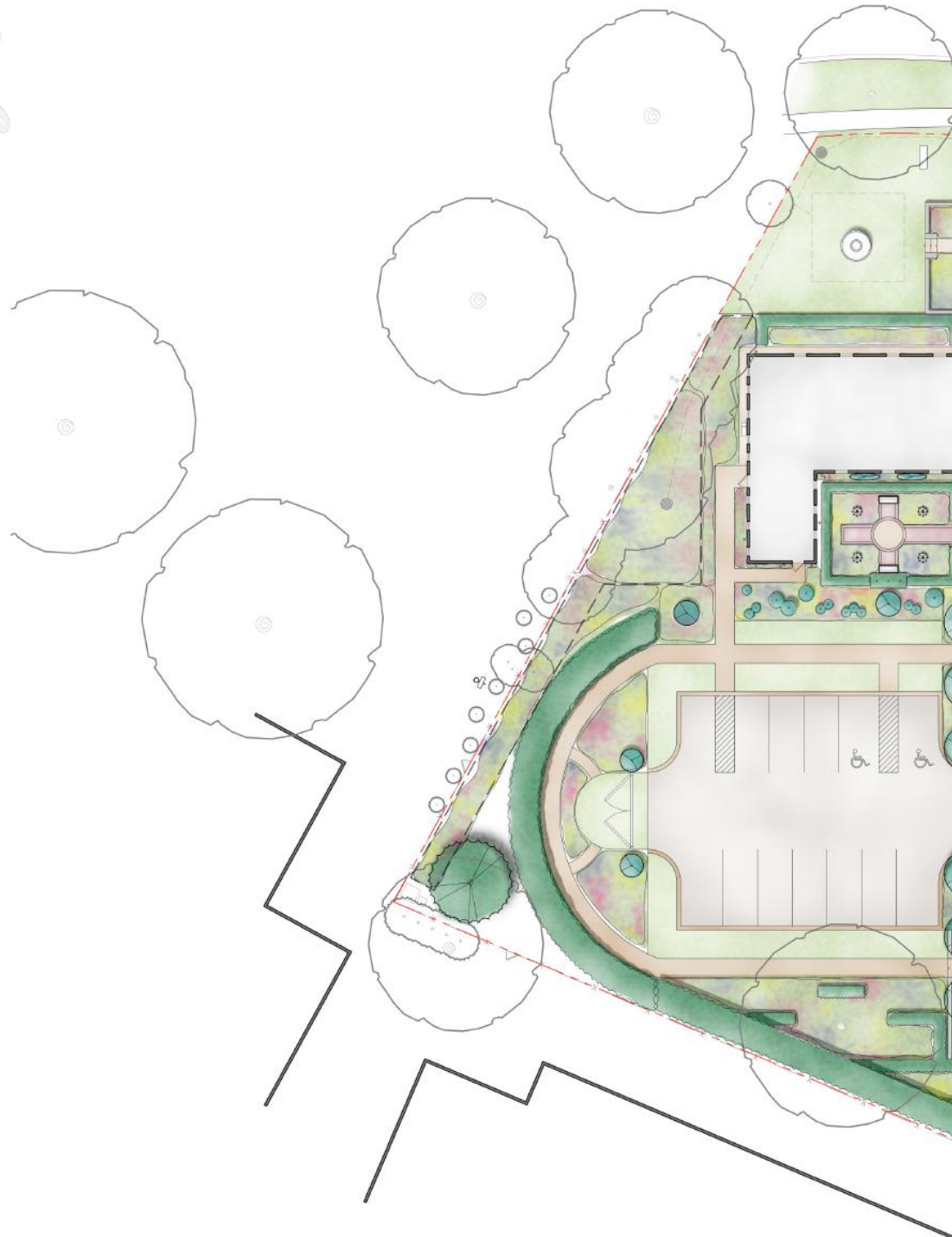
In honor of the History Center's 50th anniversary, the museum is also establishing a supporting endowment to ensure that our learning gardens, treasured stories, artifacts, and programs will exist for future generations to experience.

WITH YOUR SUPPORT, WE WILL
CELEBRATE HISTORY INSIDE AND OUT.



THE GRAND SCHEME

GARDEN HISTORY IS OUR HISTORY, WITH
NATIONAL INFLUENCE THAT REMAINS TODAY





The transformation of the grounds takes the visitor from the turn-of-the-century traditional, Midwestern estate garden through the romantic, transitional style that is still present in our community and beyond.

The master plan includes a courtyard garden, the beautiful “secret” garden that adorned many local homes, and the unique modernist garden that used a more curvilinear design of Lake Forest’s plan to bring a new sense of modernism into garden spaces.

**OVER 100 YEARS
OF GARDEN
HISTORY WAITING
TO BE TOLD**



THE GARDENS

VISITORS WILL BE ABLE TO WALK ON PATHS
GARDEN COLLECTION FROM GRAND ESTATES

NATURE & NURTURE

The gardens will have educational panels that help visitors learn about our important contribution to design history. Supporting the garden panels will be expanded narratives on our digital platform.



THAT TAKE YOU THROUGH THE ENTIRE
OF THE 1900S THROUGH TODAY'S STYLE.



CONSERVATION & CULTURE

Our museum touchscreens will feature stories on the landscape architects and designers; the importance of garden clubs to building and preserving this history, and the workers who built and maintained the gardens of our magnificent estates for more than a century.

These stories will also cover the essential influence landscape design had on preserving our prairies, forests, bluffs, and ravines.



ORNAMENTATION

THE GARDENS WILL CREATE A FORUM FOR DIALOGUE ABOUT THE ARTISTRY OF LANDSCAPING, BOTH HISTORIC AND CURRENT.

A TIME FOR PAUSE

Much of the beauty of our historical gardens came from the sculptures, water features, and follies that brought artistry to the garden grounds. These features provided a beautiful center point for contemplation and appreciation.





HISTORY & HARMONY

Our gardens will incorporate significant historical artifacts and recreations of ornamentation that defined the historic gardens of Lake Forest and Lake Bluff.



Benches will allow visitors to sit and relax in the gardens.



ENDOWMENT

A SOCIETY GROWS GREAT WHEN PEOPLE
PLANT TREES WHOSE SHADE THEY KNOW
THEY SHALL NEVER SIT IN.

— GREEK PROVERB

The endowment fund protects our investment in the history of our community. A strong endowment is critical to securing our future, providing funds for anticipated upkeep of the gardens, archives and the museum.

A GIFT THAT GROWS

We invite you to contribute to this unique endeavor through your sponsorship and support for the Garden and Endowment Initiative.

Our local contribution to landscape design and preservation is an important story for our community to celebrate and share with the broader world.

We believe that our history of garden design should not be relegated to books and photos. We hope you share this belief and will help us keep this story alive for many generations to come.

Carol



Carol Summerfield
Executive Director
History Center of LFLB

CRAIG



Craig Bergmann
President
Craig Bergmann
Landscape Design

Katie



Katie Hale
Board President
History Center of LFLB









LAKE FOREST-LAKE BLUFF

GARDEN & ENDOWMENT INITIATIVE PLEDGE CARD

50TH ANNIVERSARY GARDEN & ENDOWMENT INITIATIVE

DONOR INFORMATION (PLEASE PRINT)

Name _____
Address _____
City _____ State ____ Zip _____
Email _____ Phone _____
Signature _____ Date _____

DONOR RECOGNITION (DONORS WILL BE RECOGNIZED IN PROMOTIONAL MATERIALS UNLESS ANONYMOUS GIFT IS REQUESTED)

Please use the following name(s) in all acknowledgements:

 I (we) wish to remain anonymous

PLEDGE INFORMATION

Total amount of Pledge: \$ _____

Pledge to be paid as follows:

I am supporting this campaign today with the gift of \$ _____
 Single-year payment of pledge: \$ _____ Beginning on [date]: _____
 Multiple-year payment of pledge: \$ _____ Beginning on [date]: _____
To be paid over [years]: _____

Please bill me: Annually Monthly Quarterly

Planned Gifts and Stock: Please contact the History Center Lake Forest-Lake Bluff for more information.

PAYMENT INFORMATION

I (we) plan to make my (our) contribution in the form of:

cash check charge stock property other _____

Please charge my credit card: VISA MasterCard Discover AmEx

Credit Card No.: _____ Expiration _____ CVC _____

Authorized Credit Card Signature _____

My gift will be matched by: (Company/Foundation/Family)

Pledges may be sent to: History Center Lake Forest-Lake Bluff • 509 E. Deerpath • Lake Forest, IL 60045 • www.lflbhistory.org

History Center of Lake Forest-Lake Bluff is a not-for-profit 501(c)(3) Internal Revenue Service designation-federal tax id#23-7213177. Donations are tax-deductible to the extent allowed by law.